

H.264 DVR Quick Start Guide

Version 1.a



Model: ES00M140, ES00M180

Before You Begin

1 Introduction	2
1.1 Safety Information.....	2
1.2 Contents of the box.....	2
1.3 Hard disk installation	2
1.4 Front panel.....	3
1.5 Rear panel.....	4
1.6 Mouse Control	4
2 Basic operation	5
2.1 Login System.....	5
2.2 Main Menu	5
2.2.1 System setup.....	6
2.2.2 Format Hard Drive	8
2.2.3 Record.....	9
2.2.4 Playback	10
2.2.5 Network	12
2.2.6 Web View.....	13
3 Appendix	14
A. Network Security Setting.....	14
B. Connection Setting.....	15

1. Introduction

1.1 Safety Information

- Before setting up the DVR, carefully read all the documentation that came with your package.
- To prevent fire and shock hazard, never expose the DVR to rain or moisture.
- If the power supply is broken, do not try to fix it by yourself. Contact a qualified service technician or your retailer.
- Before using the product, make sure all cables are correctly connected and the power cables are not damaged. If you detect any damage, contact your dealer immediately
- The DVR should be operated only by the type of power source indicated on the label. If you are not sure of the type of power supplied to your home or office, consult your dealer or the local power company

1.2 Contents of the box

1. DVR device
2. Quick Start Guide
3. CD
4. Remote Control
5. Power and Power cord
6. Mouse

1.3 Hard disk installation

Before the first use, please install the hard disk.



Before you can record onto your HDD it should be formatted by the DVR system, because standard PC formatting is not compatible. The format process can take several minutes.

Your HDD should be installed inside the DVR. Please connect the(Hard Disk (HDD) in the following way. Screw the HDD into the HDD brackets or DVR base. All necessary cables are included in the package with the DVR. Use the instructions that came with the hard drive for exact wiring and

installation. Please connect the power cable to the appropriate socket, and the data cables to their corresponding connectors.



1. Loosen the cover screw



2. Remove the cover



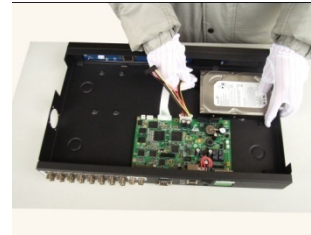
3. Insert the hard disk



4. Tighten the hard disk screw



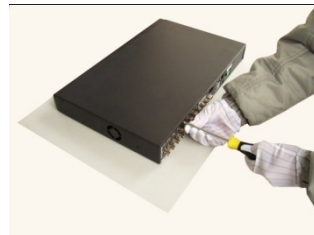
5. Connect the data wire



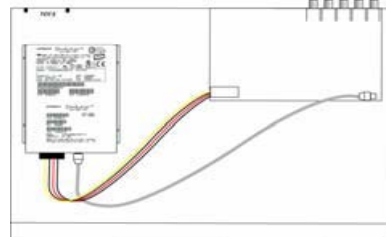
6. Connect the power wire



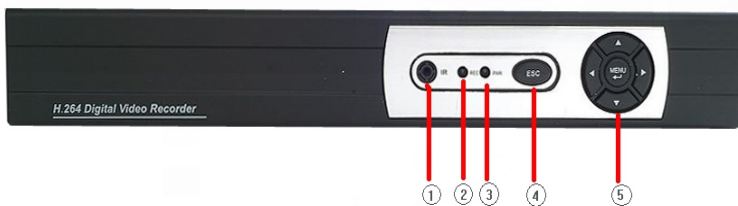
7. Cover the machine



8. Tighten the cover screw



1.4 Front panel



(1) IR remote receiver (2) Record indicator light (3) Power indicator light (4) ESC (5) Left / Up / Down / Right / Menu/ Enter

1.5 Rear panel



(1) Video inputs (2) BNC outputs (3) Audio input (4) Audio output (5) USB (6) Network
 (7) Power supply (8) VGA output (9) Power Switch (ESOOM140 without this switch)

1.6 Mouse Control

You can use a mouse to operate the DVR as well. The mouse operates just like a mouse on a Windows PC. Please connect the mouse tone of the USB connectors (#5) in the back panel and please note that you can hot-plug the mouse.

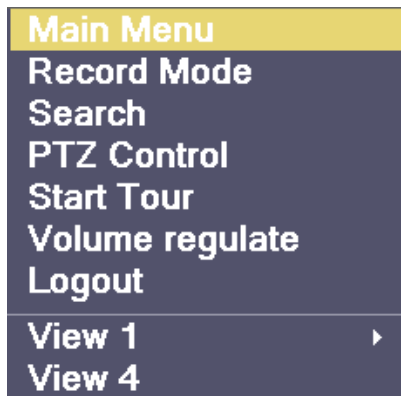
Right clicking	In live display mode, right clicking will either display or hide the tool bar. In main menu or sub menu mode, right clicking will exit current menu. Note: the settings will not be saved after right clicking.
Left clicking	When in menu unlock mode in the tool bar left click on the SYSTEM SETTINGS icon to enter into the main menu. After entering the main menu, left clicking will enter sub menus. On [detail files] menu mode, left clicking will playback one recording file. By left clicking you can select values in edit boxes or pull-down menus The system supports Chinese character inputs, special symbols, numbers and letters. On the playback interface left clicking can control the >> forward function, << reverse function, >> Slow play function, > frame play function, > Play function, and X exit function. You can left click to adjust color control bar, volume control bar and screen control bar. On the main menu, sub menu or playback view, you can left click "x" to exit the current menu. You can left click to change the status box of a check box in the motion detection area.
Double clicking left key	On the live view or playback video, double-clicking will maximize the screen. Double clicking on the maximized screen will return it to the multi camera view.
Mouse drag	In the Motion Detection setting interface, you can left click to drag Mouse, and drag the frame to set the motion detection area. Use the mouse to select menu items.

Getting Started and Main Menu

2. Basic operation

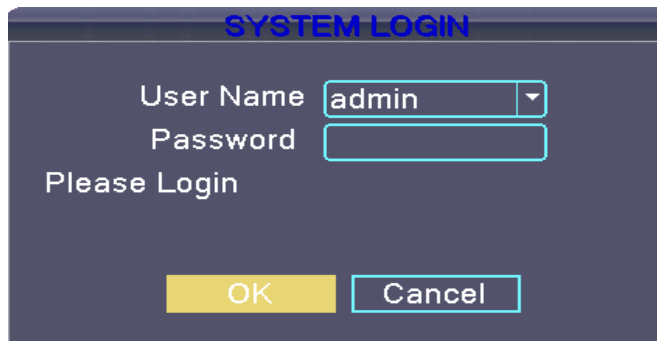
2.1 Login System

In preview mode you can right click the mouse to get a desktop shortcut menu. Right click the mouse again, and you will see the following:



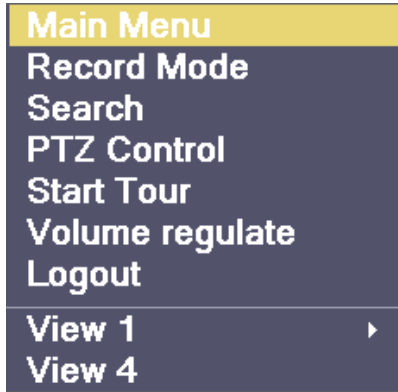
Input your username and password and select OK.

Note: The default password for admin is blank when you receive the new DVR.

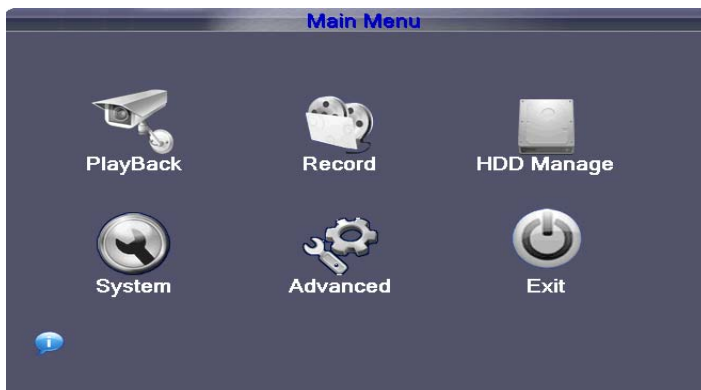


2.2 Main Menu

After logging into preview mode, you can right click the mouse to get a desktop shortcut menu. Right click mouse again and select the Main Menu



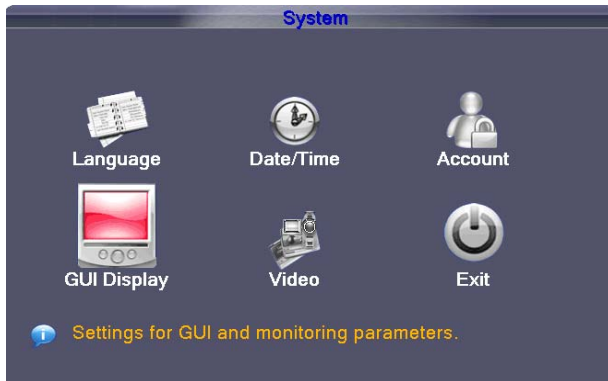
When the Main Menu appears, click the system icon in the main menu shown below:



2.2.1 System setup

Set all the system parameters by clicking each icon *.i.e.* **Language, Date/Time, Account, GUI Display, and Video**. After setting all the parameters, click “**Exit**” on the System Menu.

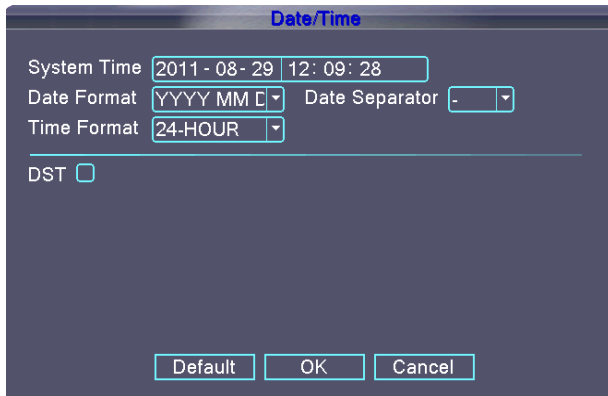




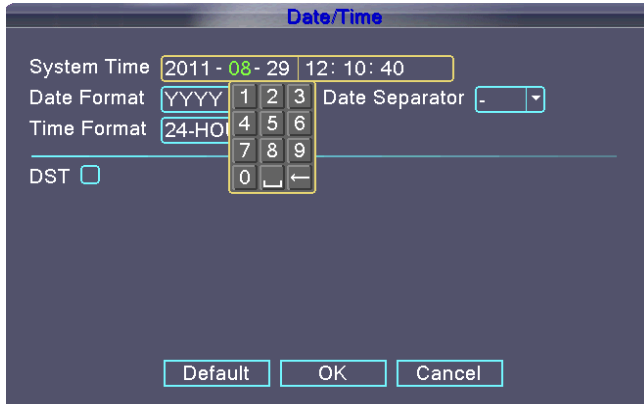
Click **[Language]** ---> Select your language from the drop down menu. Then click "OK".



【System time】 Set the system date and time on the Date/Time Menu



Enter the month, date, and time using the virtual keypad



【DST】 Click for Daylight Saving Time.

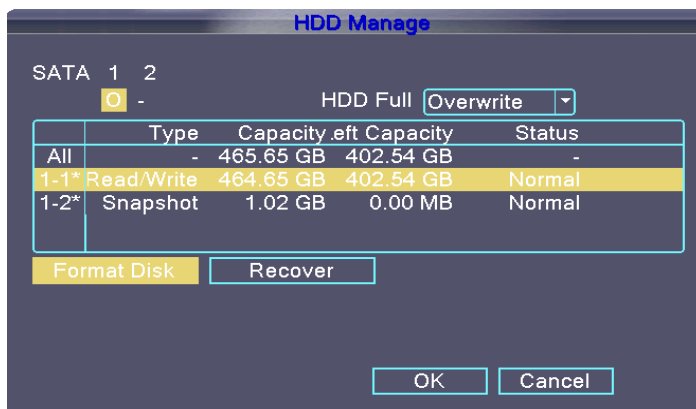
Daylight savings time “On” means DST is enabled. You can setup the start time and end time of DST.

2.2.2 Format Hard Drive

If you install a new hard drive (HDD), you must format the HDD before using it to record. To format a drive, go back to the main menu, click > the HDD Manage Icon on the **Main Menu** screen



Select the preferred HDD > on the **HDD Manage** screen. Click 【Format Disk】 then Click 【OK】 to complete.



2.2.3 Record

The User needs to install and format a HDD, and set all the recording parameters before recording. There are 2 record modes: **Scheduled**, and **Manual**, along with **Stop** for (No record).

Note: Record frame rate, resolution, quality and hard drive space will affect the total recording time of DVR system.

Note: All parameters will affect the recording time length for HDD. Recording higher quality images at a higher frame rate will result in a shorter recording time for the same size HDD.



To set the recording parameters click the “Record icon” on the Main Menu. You will set the recording parameters on the following screen.



【Resolution】 Indicates the setup resolution and code rate for recording. There are four options: D1.HD1, CIF and QCIF.

【Frame Rate】 In this section, you can choose the recording frame rate (frames per second) for the current channel. The higher the record frame rate, the more natural movement you will see in playback mode.

【Quality】 There are several options: Choose the one that is the best for your purpose.

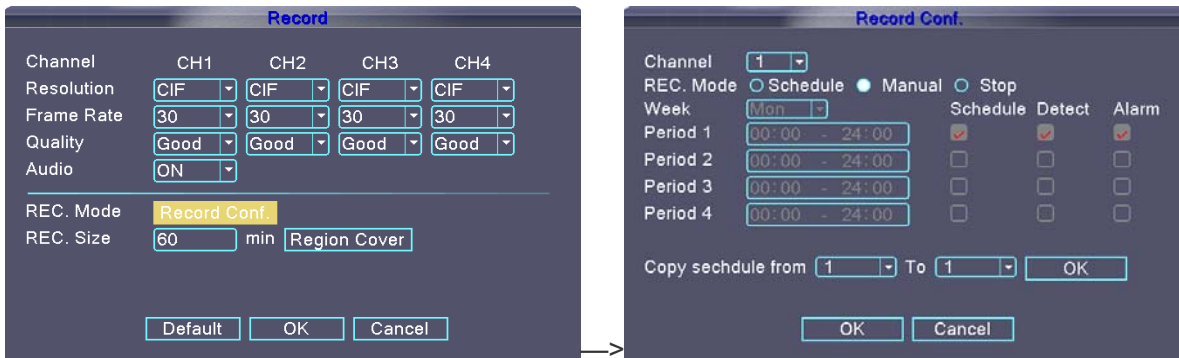
【REC. Mode】 There are three options: Schedule, Manual and Stop. Click the REC. Mode field and you will be taken to the menu below.

SCHEDULE: This setup function allows you to create a schedule for recording tasks throughout the week, so that only certain selected events are actually recorded on the HDD. For example, you may setup the system to record non-stop throughout your normal business hours, making it a

schedule-triggered recoding at lunch time (that means no recording will be performed unless an alarm event happens), night time being set to motion detection recording with certain hours made more secure with the combined schedule and motion detection triggered recording, finally making it more sophisticated by specifically setting a no-record time slot when you stay in the office alone in the wee hours of weekday mornings. You can setup any schedule that fits your needs..

Please note that manual recording overrides all record settings and will be carried on until stopped by the operator.

CHANNEL: You can select all channels or just one channel. You can also copy the settings from one channel to other.



【REC. Size】 It will pack by the time you selected.

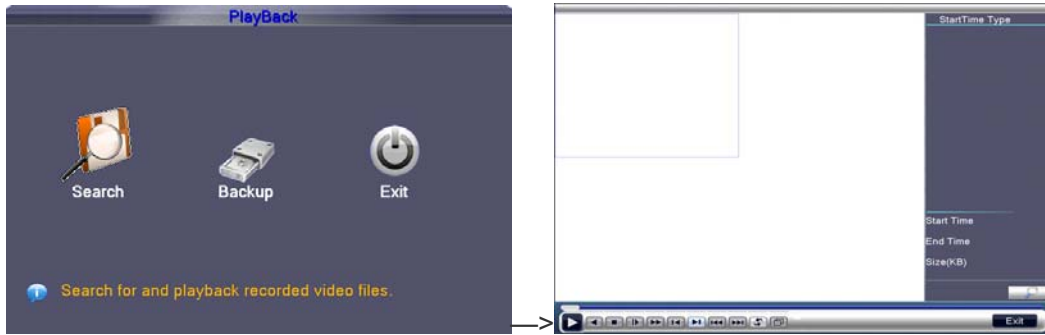
Click “OK” and “OK” again in each following menu to return to the Main Menu.


Note: ES00M140,ES00M180 both do not have the “ Alarm” function.

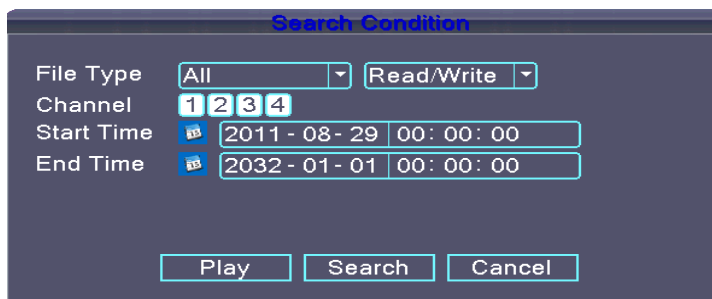
2.2.4 Playback

The DVR supports live recorded playback, and time search. Select Main Menu > Playback > Search




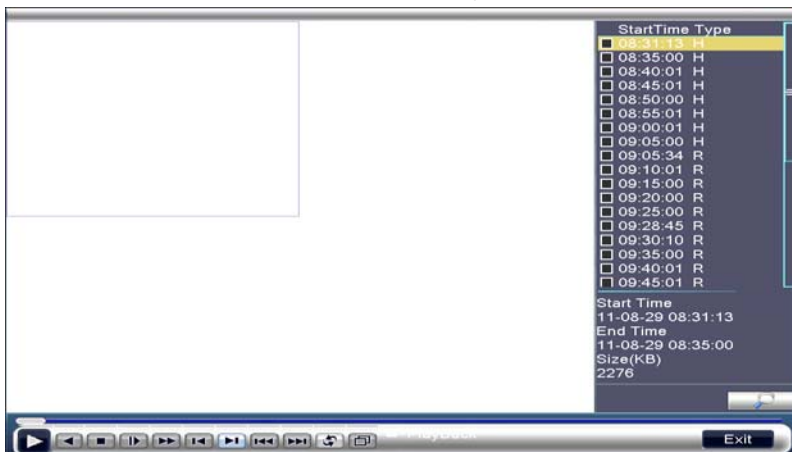


【Search】 Use the Quick click button  and enter the time period you want to search using the virtual keypad, then click the search button



Enter the time period you want to search, and click the search button

Then, select one file, and click the play button  or double click the file



Note: Record setup will affect the total channels you can playback at the same time.

Note: If the recording mode is set to D1 resolution at 30 FPS for all 4 channels in the 4 channel DVR, the user can only use 2 channels for simultaneous playback. The User can either reduce the resolution or the frame rate of the recording setup in order to increase the number of channels the user can use for simultaneous playback.

Note: After you playback, you can change the time based on the selected channel. If you want to change both time and channel, you need to start over the search function.

Note: The recording mode set to both “Regular” and “Detect”. If you want to playback “Regular”, you must select file type to be “All”, not general. And you want to playback the “Detect”, you can choice the file type to be “MD”.

2.2.5 Network

To connect the DVR to the internet, certain settings must be input to the DVR. To access your DVR from the internet, you will need either a Static IP from your internet service provider (IPS) or a router with Dynamic DNS (DDNS) capacity and an account with an online DDNS service. This service is country specific, but in many countries, you can use the manufacturer suggested service id <http://www.dyndns.org>. If the below parameters are not clear, please contact your network consultant for help.

Main Menu > Advanced> Network, then enter the parameters you need to setup for the network



【Type】 there are three options: Static IP, DHCP, and PPPoE

Network

Type: StaticIP

Media Port: 34567

Web Port: 80

IP Address: 10 . 6 . 2 . 17

Subnet Mask: 255 . 255 . 0 . 0

Gateway: 10 . 6 . 0 . 1

Primary DNS: 202 . 101 . 172 . 35

Secondary DNS: 202 . 101 . 172 . 46

Buttons: DDNS, UPNP, ARSP, OK, Cancel

Network

Type: DHCP

Media Port: 34567

Web Port: 80

IP Address: 10 . 6 . 2 . 88

Subnet Mask: 255 . 255 . 0 . 0

Gateway: 10 . 6 . 0 . 1

Primary DNS: 202 . 101 . 172 . 35

Secondary DNS: 202 . 101 . 172 . 46

Buttons: DDNS, UPNP, ARSP, OK, Cancel

Network

Type: PPPOE

Media Port: 34567

Web Port: 80

User Name: []

Password: []

IP Address: 10 . 6 . 2 . 88

Primary DNS: 202 . 101 . 172 . 35

Secondary DNS: 202 . 101 . 172 . 46

Buttons: DDNS, UPNP, ARSP, OK, Cancel

【Media Port】 Transfers video data between client and device, default is 34567

【Web Port】 Sets up the port of IE browser via HTTP, default is 80

【IP Address】 Set up the IP address

【Subnet Mask】 Set up the Subnet mask

【Gateway】 Set up the default gateway

【DNS】 Set up the domain name sever

【DDNS】 Click the button **DDNS**. This will take you to the following screen.

2.2.6 Web

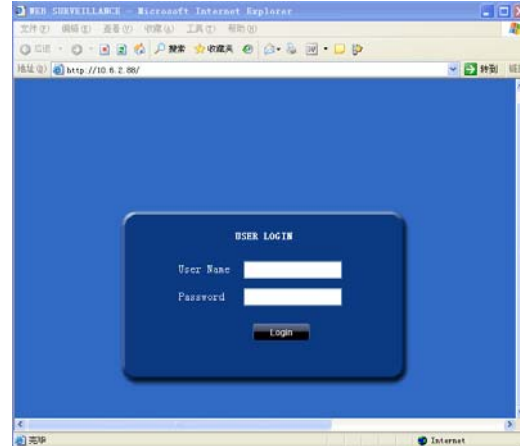
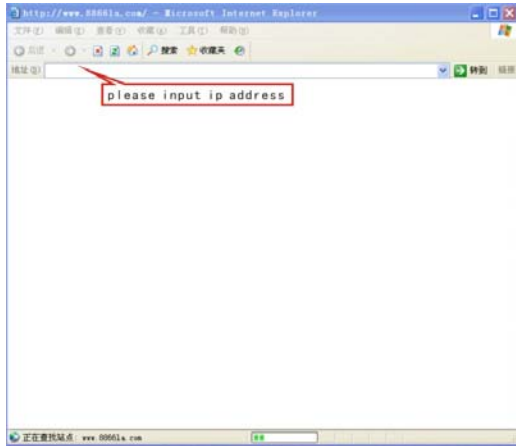
Open IE browser, input the correct IP address and port number, and you will see the following screen. Input the correct name and password, and then click the Login button.

Note: Make sure all the active controls for internet security on your PC are enabled. For IE, you can go to **Tools > Internet Options > Security**.

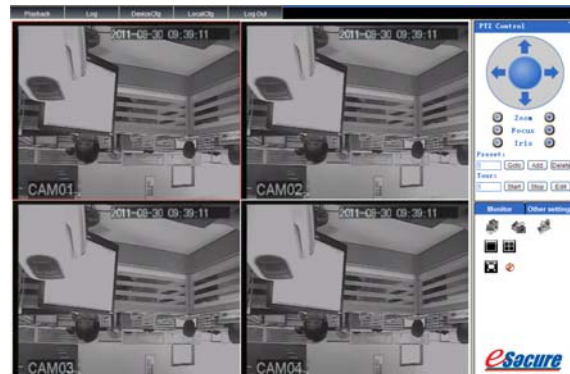
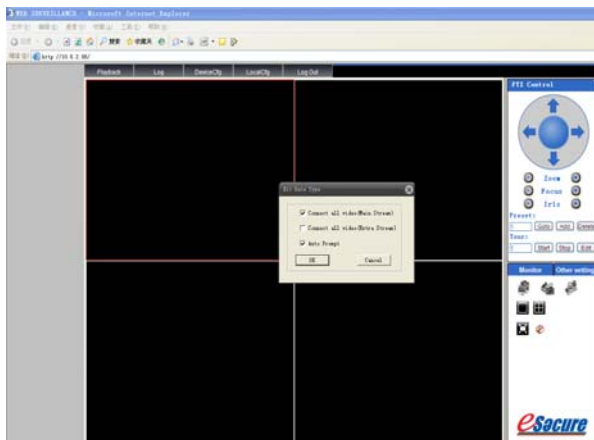
Note: The default user ID is “admin”. Default password is blank

Note: RESTRICTION :

To ensure the PC's stable interfacing with the DVR, we recommend Windows XP or Windows Vista operation system, and IE 6.0, IE 7.0 browsers.



After you login, you will see the following screen. Click the Ok button
 If you want to exit at this point, please select the Logout button



[Main Stream] This choice will provide the user with the best image to view but will affect the frame rate the user can receive.

[Extra Stream] This choice will provide the user with a lower grade image; however, the picture will run smoother due to the higher frame rate.

[Auto Prompt] After logging in using the web viewing mode, the screen will auto prompt the window of stream choice to user when you select the function.

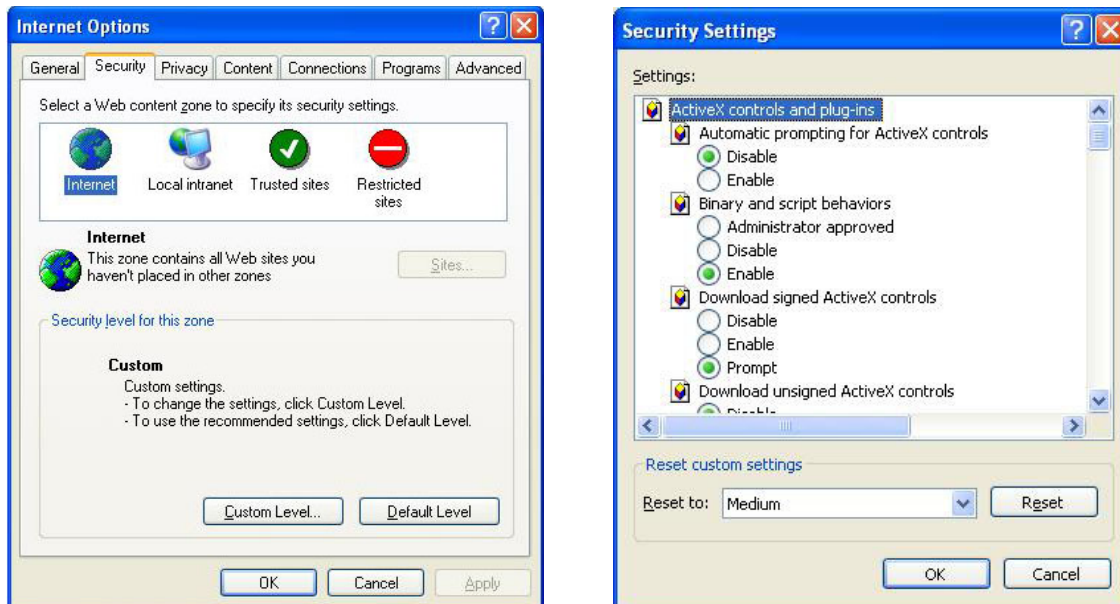
App

A. Network Security Setting

Prior to controlling installation, please program the network security level by using the following operations:

- (1) Open the IE browser and click [Tools→ Internet Options].
- (2) Choose the “Security” tab in the dialogue box.

(3) Click “Customization level” to enter into the security Setting



Set the ActiveX control and pluggable unit. Select the following options

- √ ActiveX control auto-prompting
- √ Run the script of the ActiveX control which is marked to safely implement the script.
- √ Implement initialization and run the script of the ActiveX control which is not marked to safely implement the script.
- √ Binary system and the script behavior
- √ Download the unsigned ActiveX control
- √ Download the signed ActiveX control
- √ Perform the ActiveX control and pluggable unit

It's extremely important to “enable” the items above.

Prompt: Before control installation, please turn off the fire wall and the anti-virus software.

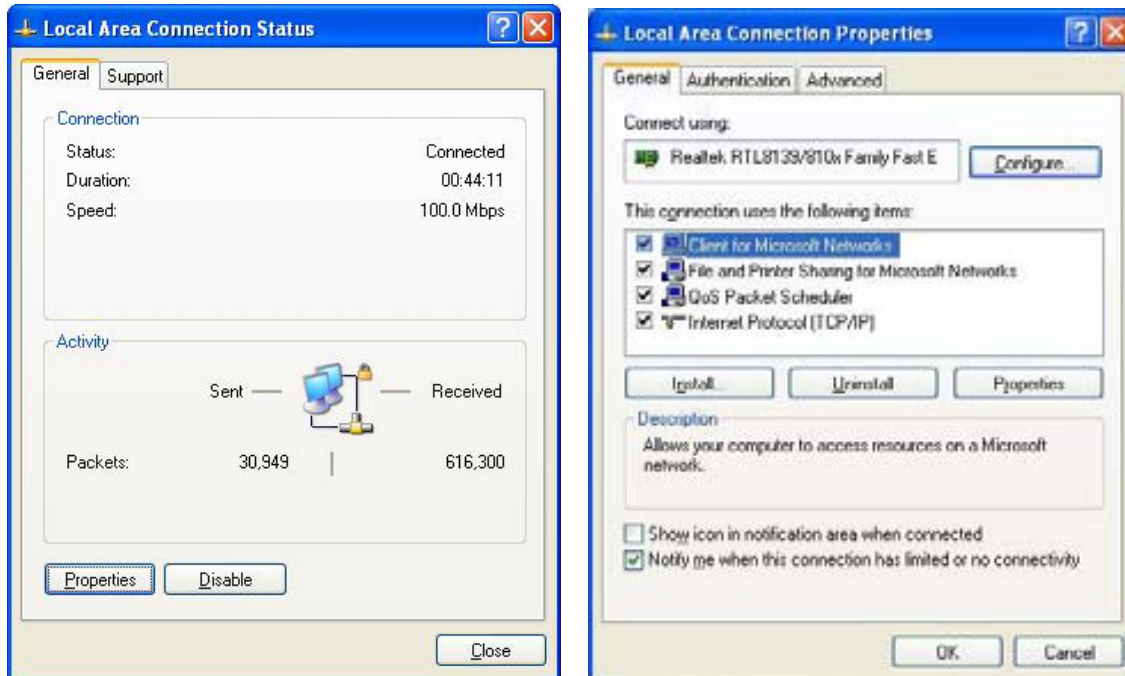
B. Connection Setting

The remote access for the hard disk recording machine should be carried out through the network. In the local area network connection, the IP address of the client-side computer must be on the same network section with that of the hard disk recording machine. While in the wide area network connection, just ensure that two sides can access the public network, and connect through the IP address or the dynamic domain name. The following will mainly focus on connecting and setting the method for the local area network.

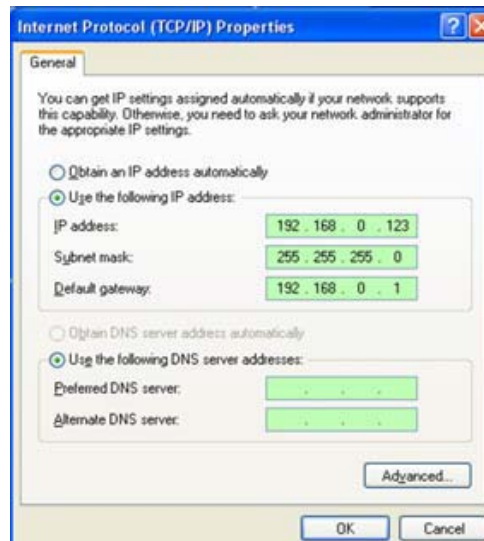
Step 1: Right click on “Network neighborhood” and click “Attribute” in the ejected menu to open the “Network connection”.

Step 2: Double click to open “Local connection”.

Step 3: Click “Attribute”.



Step 4: Double click “Internet protocol (TCP/IP)”.



Step 5: Examine the IP address, subnet mask, and default gateway on the PC.

Step 6: Set the corresponding IP address, subnet mask, and default gateway on the DVR. If the subnet mask and default gateway on the DVR are the same as those of the PC, then the IP address must be in the same network section but cannot be the same as the used one. Otherwise, it will cause IP address conflicts. Take the figure above as an example, the IP address should be: 192.168.0.X, wherein, X cannot be 40 or 1 (including other IP addresses currently being used), and cannot surpass 255, the subnet mask is 255.255.255.0, and the gateway is 192.168.0.1.